



Cullington Close, Harrow, HA3

£565,000



## Cullington Close, Harrow, HA3

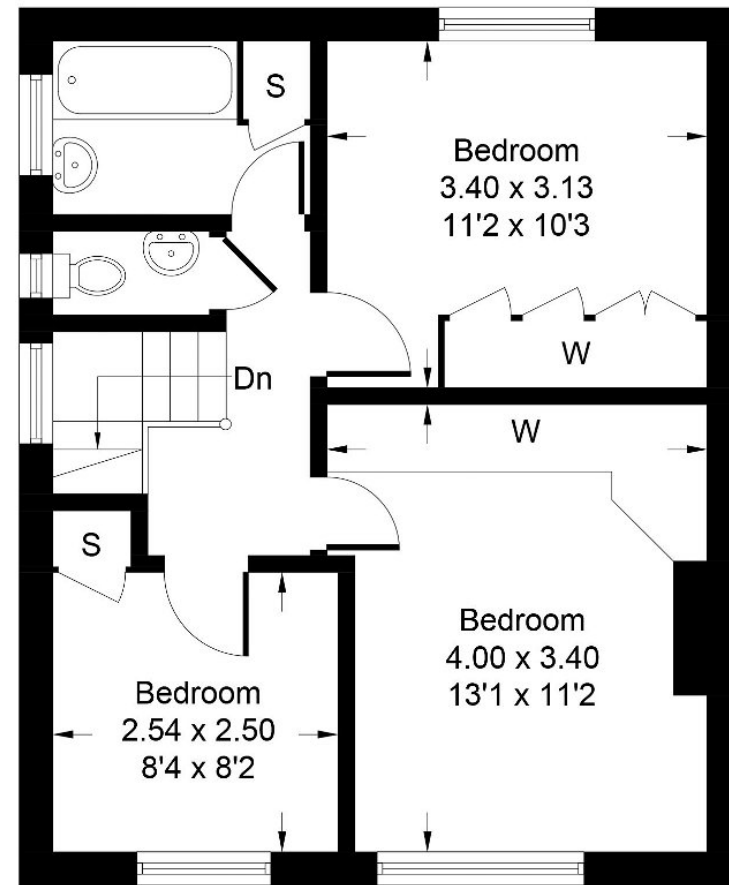
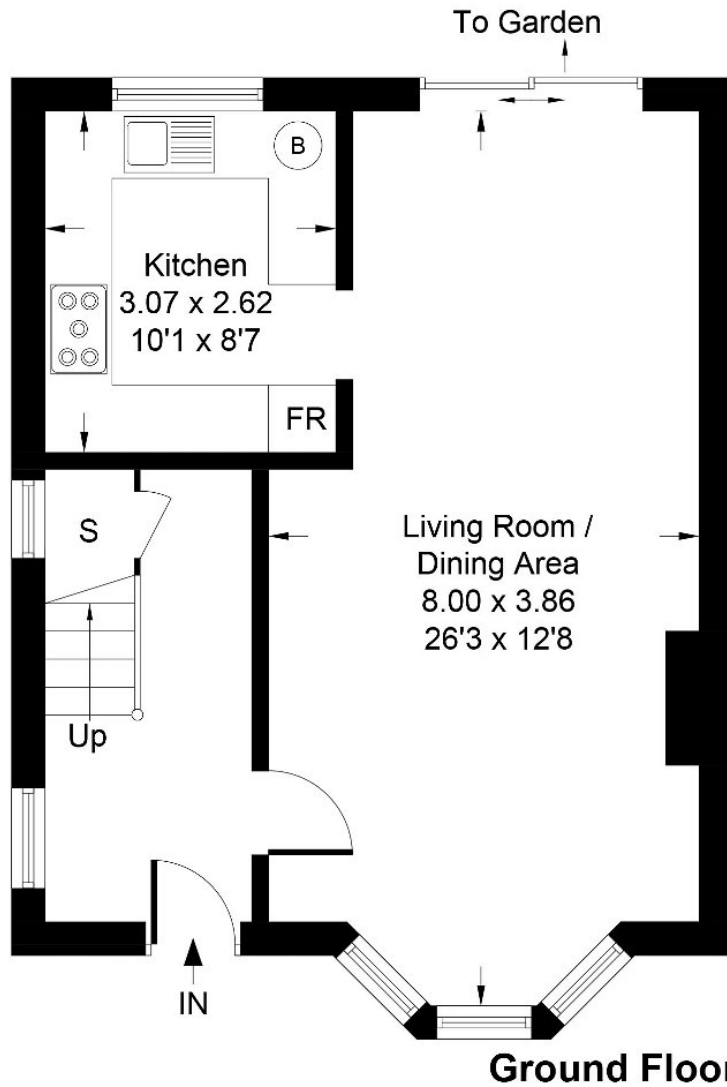
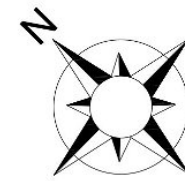
A well presented and chain free, three bedroom semi-detached house having recently been modernised and decorated located close to Harrow Leisure Centre, Harrow & Wealdstone station, Elmgrove Primary school and Harrow town centre. The property has off street parking to the front and approx 75' rear garden providing potential for extensions subject to planning permission.







Approximate Gross Internal Area = 86.09 sq m / 927 sq ft



Whilst every attempt has been made to ensure the accuracy of the floor plan contained here, measurements of doors, windows, rooms and any other items are approximate and no responsibility is taken for any error, omission, or mis-statement. This plan is for illustrative purposes only and should be used as such by any prospective purchase.